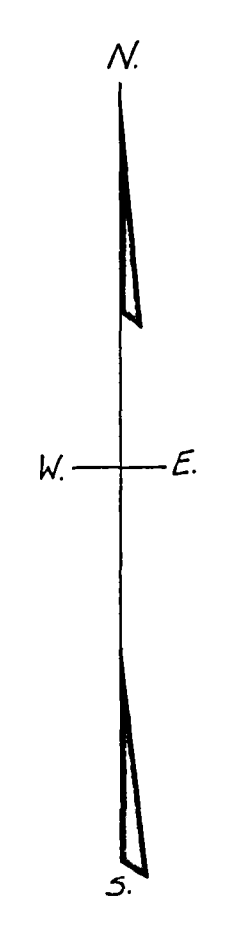
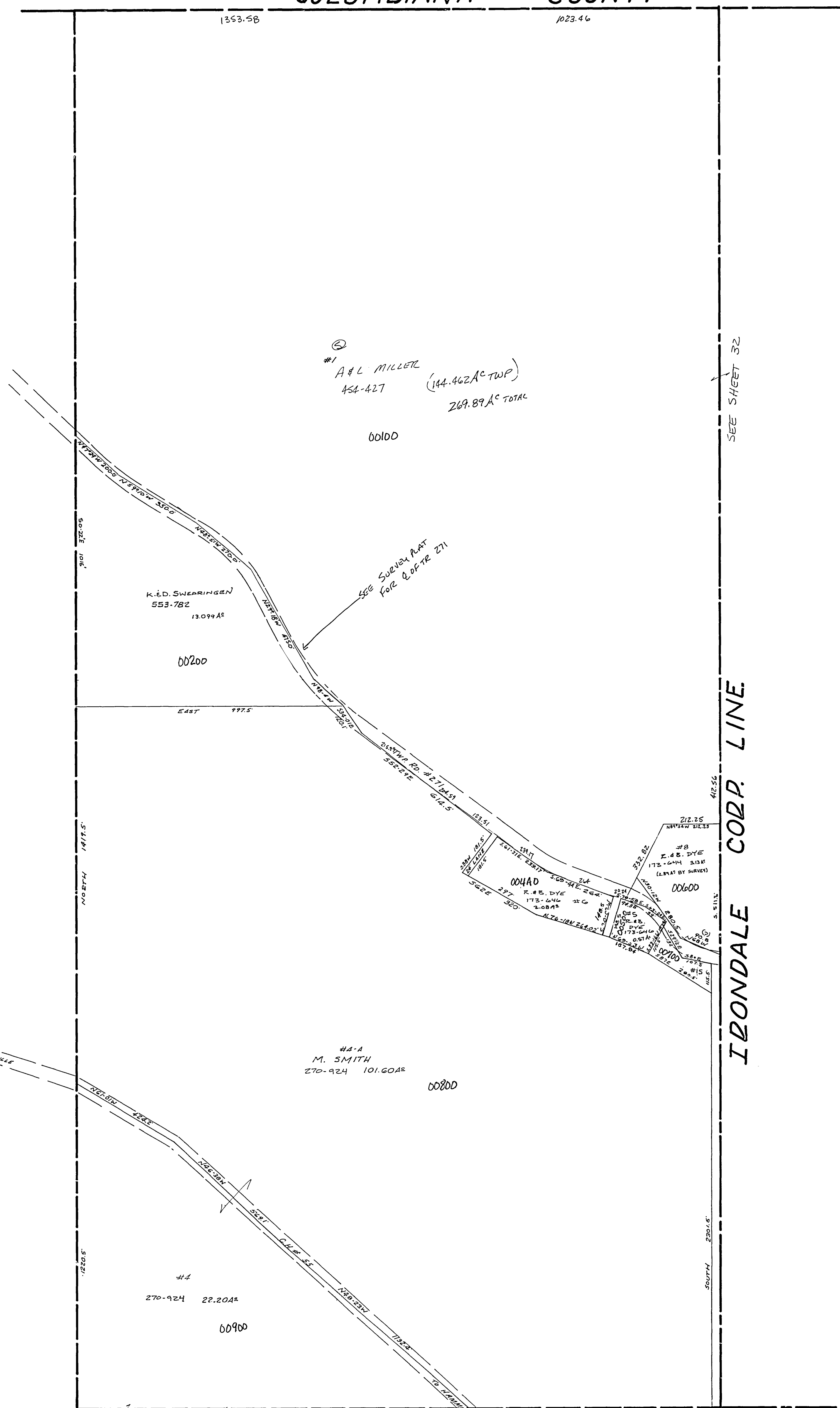


COLUMBIANA COUNTY

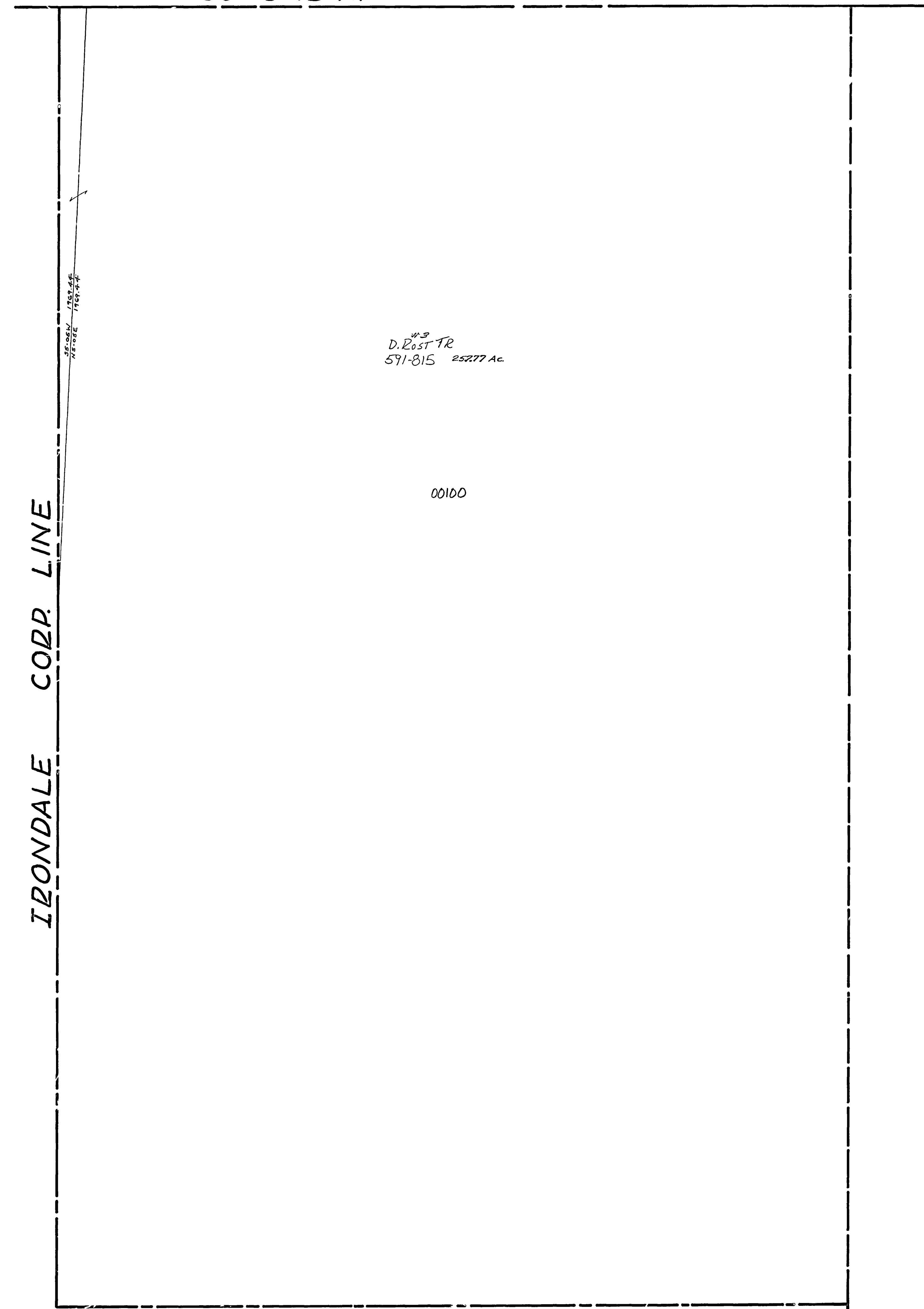


SEC. 32.
WEST HALF

MAP 3200

27-3200-

COLUMBIANA COUNTY



SEC. 26.
EAST PART

IRONDALE CORP. LINE

MAP 2600

27-2600-

SALINE TWP.
SECTION 26-32, T.9, R.2.
SCALE: 1"=200'

226
26-32